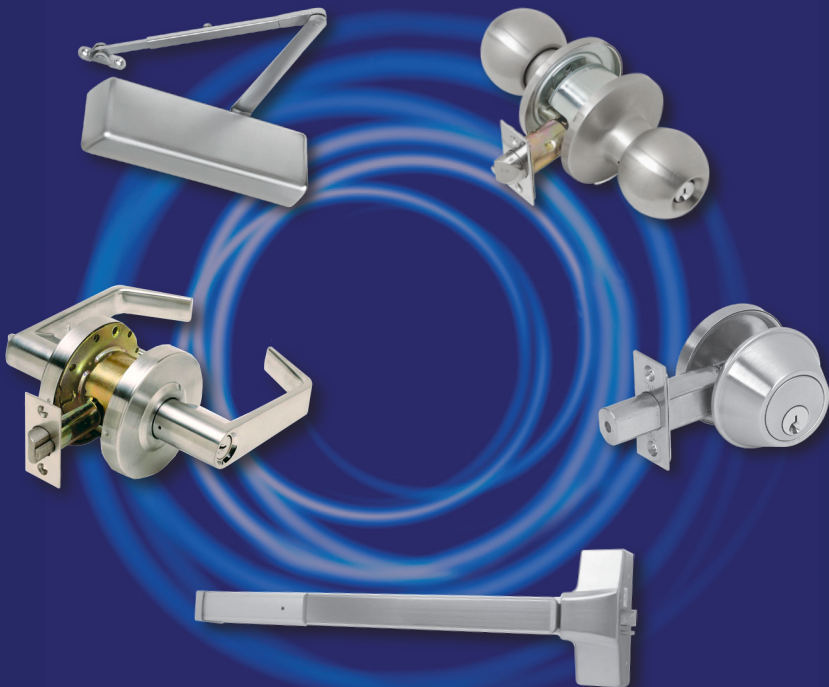


**SOUTHERN
LOCK** *EAS*
Electronic Access
Specialists

NSP

NSP CATALOG

The Security Professional's Choice



Toll Free Phones at all our Warehouse Locations!

.....
Largo - Corporate Headquarters: 800-282-2837
Charlotte: 888-571-9145 Pompano Beach: 888-780-6071

GSA

Contract Holder
GS-07F 0478Y

Shop Online
www.SouthernLock.com

**SOUTHERN
LOCK** *EAS*

INDEX

www.SouthernLock.com

Sales@SouthernLock.com

Toll Free Phone: 800-282-2837

Toll Free Fax: 800-447-2299

Corporate Headquarters

P.O. Box 1980
Pinellas Park, FL 33780-1980
(727) 541-5536
FAX: (727) 544-8278

Southern Lock of Largo

10910 Endeavour Way
Largo, FL 33777
(727) 541-5536
Toll Free: (800) 282-2837

Southern Lock of South Florida

1445 SW 6th Court
Pompano Beach, FL 33069
(954) 943-1177
FAX: (954) 943-4211
Toll Free: (888) 780-6071

Southern Lock of Charlotte

8200-C Arrowridge Blvd.
Charlotte, NC 28273
(704) 527-6777
FAX: (704) 527-0058
Toll Free: (888) 571-9145

INDEX	PAGE
ANSI Strikes	28
Automotive	4-9
Cam Locks	29
Deadbolts, Grade 2	17
Deadbolts, Grade 3	19
Door Closers	26-27
Drawer Locks	29-30
Electrified Leversets	11
Exit Devices & Trim	22-25
File Cabinet Locks	30
Function & Finish Chart	3
Hinges	28
Knob Locks, Grade 2	16
Knob Locks, Grade 3	18
Lever Handles & Paddles	21
Leversets, Grade 1	10-11
Leversets, Grade 2	12-13
Leversets, Grade 2 "Clutch"	13
Look-a-Like Remotes	5-9
Mortise Thumbturn Cylinder	28
Narrow Stile Locks	20-21
Pins	31
Pin Kits	31
Pivots	28
Push/Pull Paddles	21
Thumbturn Locks	30
Transponder Key Blanks	4
Wafer Keying Kit	31

**SOUTHERN
LOCK** EST. 1964 **EAS**




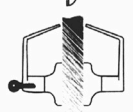



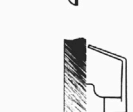

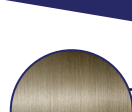
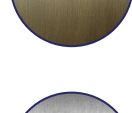
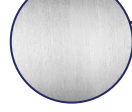

SHDA
Security Hardware Distributors Association

Electronic Access
Specialists

Printed in USA. All rights reserved. © 2022 Southern Lock & Supply Co.
Southern Lock is not responsible for typographical, omissions, or other errors.

FUNCTIONS

2600/2400/1200 Series Function Chart

FUNCTION	FUNCTION NO.	OUTSIDE	INSIDE	FUNCTION DESCRIPTION	ANSI NO.
Entry/Office	81			<ul style="list-style-type: none"> ■ Latchbolt operated by lever from either side ■ Outside lever locked by turn button from inside ■ Unlocked by key from outside or rotating inside lever 	F82
Classroom	84			<ul style="list-style-type: none"> ■ Latchbolt operated by lever from each side ■ Outside lever locked or unlocked by key from outside ■ Inside lever always operates latch 	F84
Storeroom	86			<ul style="list-style-type: none"> ■ Latch operated by rotating inside lever or key in outside lever ■ Outside lever always fixed 	F86
Privacy Bedroom/Bathroom	76			<ul style="list-style-type: none"> ■ Latchbolt operated by lever from either side ■ Outside lever locked by push button on inside ■ Unlocked by emergency release on outside, rotating inside lever, or closing door 	F76
Passage/Closet	75			<ul style="list-style-type: none"> ■ Latchbolt operated by lever from either side at all times 	F75
Single Dummy	01			<ul style="list-style-type: none"> ■ Pull lever one side ■ No mechanical operation 	

FINISHES



NEW!**AUTOMOTIVE****TRANSPONDER KEY BLANKS**

ORDER #	ITEM #
864-4503	B103
864-4378	B107/PT04
864-4801	B107-T5/ PT05-T5
864-7062	B110 PK3+
864-4373	B111
864-4358	B112
864-7144	B114
864-7058	B114/DW04R
864-7145	B114R
864-7100	B115
864-7143	B119
864-4407	B120
864-4459	B97
864-4502	B99
864-4377	B99-T5
864-7074	BJAG2
864-7086	DAT17
864-7078	DWO4RT6
864-4128	H128
864-4450	H72
864-4448	H73
864-4375	H74/H86
864-7068	H91/FO21T17
864-4815	H92
864-4189	H94/HU101
864-4504	HD106
864-4461	HD106-T5

ORDER #	ITEM #
864-4491	HD111
864-4489	HD113
864-4505	HO01
864-4371	HO01T5
864-4487	HO03
864-4492	HO05
864-7080	HON58RT6
864-7060	HU39
864-4540	HU46T2
864-4402	HU56
864-7064	HU58
864-4312	HU66AT6
864-7104	HU66T24
864-4311	HU66T6
864-7084	HU92
864-4602	HY022
864-7109	HYN14RT14
864-7101	HYN20
864-4531	INF45
864-7082	JAG2000
864-7072	KK7
864-4380	KK9
864-4528	MIT12
864-4529	MIT13
864-4530	MIT14
864-7139	MIT16A
864-7140	MIT17A

ORDER #	ITEM #
864-4301	MIT8
864-4302	MIT9
864-1475	MZ34
864-4370	NI102T
864-4320	NI104T
864-4547	NSN11T2
864-7076	Pontiac G8/ Chevy Caprice
864-7066	RVV4
864-7070	Scion tC / LXP90
864-7110	SUB120
864-4473	TBE1T5
864-4476	TOY40BT4
864-4543	TOY43AT4
864-4488	TOY44D
864-7142	TOY44G
864-7146	TOY44H
864-4551	TOY48BT4
864-7155	TOY48H
864-7102	TOY50
864-4364	TOY57
864-4475	Y160
864-4374	Y164
864-4527	Y165
864-4609	Y170

LOOK-A-LIKE REMOTES

Alphabetical by
make & model

ORDER #	ITEM #
864-7165	#1A Chrysler/Dodge 2004-2018 3-Btn Remote Head Key (OHT692427AA)
864-7167	#1B Chrysler/Dodge/Jeep 2004-2016 4-Btn Rmt Head Key (OHT692427AA)
864-7280	#1C Chrysler/Dodge/Jeep 2006-2014 5-Btn Remote (OHT692427AA)
864-7320	#2A Chrysler/Dodge Vans 2004-2007 3-Btn RHK (M3N5WY72XX)
864-7296	#2B Chrysler Liberty/Pacifica 2004-2008 4-Btn RHK (M3N-5WY72XX)
864-7368	BMW 1995-2007 HU58 (EWS) 3-Btn Remote Head Key (LX8FZV/KR55WK47993)
864-7272	BMW 1999-2010 HU92 (EWS) 3-Btn Remote Head Key (LX8FZV)
864-7359	BMW 2000-2009 HU92 (CAS2) 3-Btn Remote Head Key (LX8FZV)
864-7278	BMW 3/5-Series 2006-2010 3-Button Smart Key CAS3 (KR55WK49127)
864-7159	Cadillac ATS/XTS 2013-2014 / SRX 2010-2015 5B Smart Key (N8G009768T)
864-7204	Chevrolet / GMC 2010-2019 4-Button RHK w/ Remote Start (OHT01060512)
864-7212	Chevrolet 2011-2017 5-Btn PEPS RHK w/ Remote Start (P409MK74946931)
864-7288	Chevrolet 2016-2020 4-Button Smart Key w/Trunk (HYQ4EA)
864-7246	Chevrolet Camaro/Cruze/Malibu 2016+ 5-Btn Smart Key w/Trunk (HYQ4EA)

ORDER #	ITEM #
864-7200	Chevrolet Equinox/Sonic 2010-2019 3-Btn Flip-Style RHK (OHT01060512)
864-7367	Chevrolet Silverado 2019+ 5-Btn Smart Key w/ Tailgate (HYQ1EA)
864-7292	Chevrolet/GMC 2014-2021 3-Btn Remote BLACK (M3N32337100)
864-7356	Chevy Cruze 2016-2019 4-Btn RHK (LXP-T004, XL-8)
864-7208	Chrysler / Dodge 2011-2018 5-Button Smart Key w/ Trunk (M3N40821302)
864-7184	Chrysler/Dodge 2008-2010 4-Btn FOBK #2 (IYZ-C01C)
864-7185	Chrysler/Dodge 2008-2013 5-Btn FOBK (IYZ-C01C/M3N-5W783X)
864-7161	Chrysler/Dodge 2008-2019 6-Btn FOBK #5 (IYZ-C01C/M3N-5W783X)
864-7214	Chrysler/Dodge 2011-2020 4-Btn SK (M3N-40821302)
864-7181	Chrysler/Dodge/Jeep 2005-2009 4-Btn Remote Head Key (KOBDO4A)
864-7166	Chrysler/Dodge/Jeep 2008-2013 4-Btn FOBK #11 (IYZ-C01C/M3N5W783X)
864-7298	Chrysler/Dodge/Jeep 2011-2020 4-Btn Smart Key (M3N-40821302)
864-7158	Chrysler/Dodge/Jeep/VW 2006-2019 3-Btn FOBK #1 (IYZ-C01C/M3N5W783X)
864-7264	Chrysler/Dodge/VW 2008-2019 5-Btn FOBK #4 (IYZ-C01C/M3N-5W783X)
864-7160	Chrysler/Dodge/VW 2008-2019 7-Btn FOBK #6 (IYZ-C01C/M3N-5W783X)

NEW!**AUTOMOTIVE****LOOK-A-LIKE REMOTES**Alphabetical by
make & model

ORDER #	ITEM #
864-7286	Dodge 2011-2020 3-Button Smart Key (M3N-40821302)
864-7365	Dodge Dakota/Durango/RAM 2007-2011 4-Btn RHK (KOBD-T04A)
864-7270	Dodge Dart 2012-2016 5-Btn FOBK (M3N32297100)
864-7344	Dodge Dart 2013-2016 4-Btn FOBK (M3N32297100)
864-7361	Dodge RAM 1500 2015-2017 5-Btn FOBK (GQ4-53T)
864-7342	Dodge RAM 2013-2018 4-Btn SK (GQ4-54T)
864-7168	Dodge RAM 2013-2020 3-Button FOBK (GQ4-53T)
864-7182	Dodge RAM 2013-2020 4-Btn FOBK (GQ4-53T)
864-7364	Dodge/Jeep 1998-2004 3-Button Remote (GQ43VT9T)
864-7194	Dodge/Jeep 2007-2018 4-Btn Remote Head Key (OHT692713AA)
864-7197	Fiat 500/Dodge ProMaster 2012-2018 3-Btn Flippy RHK (LTQF12AM433)
864-7164	Ford / Lincoln / Mercury 2001-2018 3-Btn RHK (CWTWB1U793)
864-7201	Ford / Lincoln / Mercury 2006-2012 4-Btn RHK (OUCD6000022, 80-Bit)
864-7169	Ford / Lincoln 2006-2019 4-Btn Remote Head Key w/ Trunk (CWTWB1U793)
864-7179	Ford 2007-2016 3-Btn Smart Key w/ Trunk (KR55WK48801, 4D-63+)
864-7228	Ford 2011-2019 3-Btn High Security Remote Head Key (OUCD6000022)

ORDER #	ITEM #
864-7358	Ford 2011-2020 4-Btn PEPS Smart Key w/ Remote Start (M3N5WY8609)
864-7163	Ford 2012-2019 4-Btn Remote Head Key (OUC6000022)
864-7238	Ford 2013-2017 5-Button Smart Key w/ Remote Start (M3N-A2C31243300)
864-7242	Ford 2013-2020 5-Button PEPS Smart Key w/ Trunk (M3N-5WY8609, EURO)
864-7282	Ford 2017-2020 5-Button Smart Key w/ Remote Start (M3N-A2C93142600)
864-7300	Ford Bronco/F-Series/Ranger 2015-2021 4-Btn RHK (N5F-A08TDA)
864-7346	Ford Edge/Expedition/Explorer/Fusion 2017+ 4-Btn SK (M3N-A2C93142300)
864-7175	Ford Explorer/F-Series 2011-2020 4-Btn RHK w/ Rmt Start (CWTWB1U793)
864-7354	Ford F-150 2015-2017 5-Btn Smart Key w/ Tailgate (M3N-A2C31243300)
864-7250	Ford F-Series 2017-2020 5-Btn Smart Key w/Tailgate (M3N-A2C93142600)
864-7205	Ford Fiesta 2015-2019 3-Button Remote Head Key (CWTWB1U793)
864-7371	Ford Fiesta 2015-2019 4-Btn Remote Head Key w/ Trunk (CWTWB1U793)
864-7232	Ford Fusion / Explorer 2013-2020 4-Btn Remote Head Key (N5F-A08TAA)
864-7343	Ford Fusion/Edge/Mustang/Explorer 2015-17 4-Btn SK (M3N-A2C31243800)

LOOK-A-LIKE REMOTES

Alphabetical by
make & model

ORDER #	ITEM #
864-7343	Ford Fusion/Edge/Mustang/ Explorer 2015-17 4-Btn SK (M3N-A2C31243800)
864-7224	Ford Truck & SUV 2017+ 3-Button Smart Key (M3N- A2C93142300)
864-7226	Ford Trucks & SUVs 2015-21 3-Btn Flippy Remote Head Key (N5F-A08TAA)
864-7187	Ford/Lincoln 2011-2020 5-Btn PEPS 2nd-Gen Smart Key (M3N- 5WY8609/10)
864-7157	Ford/Lincoln/Mercury 1996-2014 4-Btn Remote (CWTWB1U311/313/343)
864-7349	Ford/Lincoln/Mercury 2001- 2018 5-Btn RHK w/ Rmt Start (CWTWB1U793)
864-7156	Ford/Lincoln/Mercury/Maz- da 1998-2016 3-Btn Remote (CWTWB1U331/345)
864-7322	GM 2001-2011 3-Button Remote (KOBLEAR1XT)
864-7347	GM 2001-2012 3-Btn Remote Keyless Entry (L2C0007T)
864-7352	GM 2002-2009 3-Btn Remote (MYT3X6898B)
864-7345	GM 2005-2012 4-Btn Remote w/ Trunk (KOBGT04A)
864-7195	GM 2005-2012 5-Button Remote (KOBGT04A)
864-7254	GM 2006+ Trucks & SUVs 3-Btn Remote (OUC60270/221)
864-7189	GM 2007-13 4-Btn w/ RmtStart (OUC60270 OUC60221)
864-7222	GM 2007-2014 5-Btn Remote w/ Rear Hatch (OUC60270/221)
864-7220	GM 2010+ 4-Btn Flip-Style Re- mote Head Key (OHT01060512)

ORDER #	ITEM #
864-7206	GM 2010+ 5-Btn Flip-Style Re- mote Head Key (OHT01060512)
864-7276	GM 2014+ 4-Btn Remote (M3N32337100)
864-7304	GM 2014+ 4-Button Remote w/ Remote Start Chrome (M3N32337100)
864-7294	GM Sedans 2006-2013 5-Btn Re- mote w/Trunk (OUC60270/221)
864-7230	GM SUVs 2007-2013 6-Button Remote (OUC60270/221)
864-7196	GM Trucks & SUVs 2003-2007 3-Btn Remote (LHJ011)
864-7326	GMC/Chevrolet 2015-2020 6-Btn Smart Key (HYQ1AA)
864-7256	Honda Accord / Civic 2013- 2015 4-Btn Smart Key (HK1210A)
864-7188	Honda Accord 2-Door 2008- 2014 4-Btn Rmt Head Key (MLBHLIK-1T)
864-7218	Honda Accord 2008-2012 4-Btn RHK (KR55WK49308)
864-7266	Honda Accord Civic 2016-21 4-Btn Remote Head Key (MLBH- LIK6-1TA)
864-7234	Honda Accord/Civic 2013-2015 4-Btn Remote Head Key (MLBH- LIK6-1T)
864-7162	Honda Accord/Element 2003- 2010 4-Btn Rmt Head Key (OUCG8D-380H-A)
864-7172	Honda Civic 2006-2011 4-Btn Remote Head Key (N5F-S0084A)
864-7373	Honda Civic 2012-13 / Accord Plug-In 2014 RHK (N5F-A05TAA)
864-7178	Honda Civic/Odyssey 2006- 2017 3-Btn RHK (N5F-S0084A)
864-7170	Honda CRV CRZ Crosstour Fit Insight 3-Btn Rmt Head Key (MLBHLIK-1T)

NEW!**AUTOMOTIVE****LOOK-A-LIKE REMOTES**Alphabetical by
make & model

ORDER #	ITEM #
864-7193	Honda Odyssey-Ridgeline-Fit 3-Btn RHK (OUCG8D-380H-A)
864-7252	Honda Pilot 2005-2008 3-Btn Remote Head Key
864-7258	Hyundai Sonata 2014-2017 4-Btn Flip Key Remote (TQ8-RKE-4F16)
864-7216	Hyundai/Kia 2009-2017 4-Btn Smart Key (SY5HMFNA04)
864-7244	Jeep Cherokee 2014-2019 3-Btn FOBK (GQ4-53T)
864-7330	Jeep Cherokee 2014-2019 4-Btn FOBK (GQ4-53T)
864-7312	Jeep Cherokee 2014-2021 5-Btn Smart Key (GQ4-54T)
864-7328	Jeep Commander/Grand Cherokee 2006-13 5-Btn FOBK #9 (IYZ-C01C)
864-7351	Jeep Commander/Grand Cherokee 2008-2013 5-Btn FOBK #8 (IYZ-C01C)
864-7348	Jeep Grand Cherokee 2014-2020 5-Btn Smart Key (M3N-40821302)
864-7202	Jeep Grand Cherokee/Commander 2008-2013 4-Btn FOBK #7 (IYZ-C01C)
864-7369	Jeep Wrangler/Gladiator 2018-2021 4-Btn Smart Key (OHT1130261)
864-7302	Jeep/VW 2008-2013 6-Btn FOBK #10 (IYZ-C01C/M3N-5W783X)
864-7357	Kia Soul 2010-2013 3-Btn Flip Key Remote (NYOSEKSA-M11ATX, AM/FL)
864-7306	Lexus ES/GS/IS/LS 2005-2008 4-Button Smart Key (HYQ14AAB, AEM-0140)

ORDER #	ITEM #
864-7310	Lexus RX330/350/400h 2004-2009 3-Btn RHK w/ Trunk (HYQ12BBT, 4D-68)
864-7332	Mazda 2/3/5/CX-7/CX-9 2006-2015 3-Btn Flip Key (SKE12501)
864-7210	Mercedes 1997-2014 FOBK (IYZ-3312)Replaces NEC & BGA
864-7370	Mitsubishi Lancer 2008-2017 3-Btn Smart Key (OUC644M-KEY-N)
864-7180	Nissan / Infiniti 2002-2012 4-Button Remote (KBRASTU15)
864-7336	Nissan / Infiniti 2008-2019 3-Button Smart Key (KR55WK48903)
864-7314	Nissan 2007-2013 3-Btn Smart Key (CWTWBU729)
864-7177	Nissan 2007-2021 3-Btn Remote Head Key (CWTWBU751)
864-7248	Nissan 2011-2019 3-Button Smart Key (CWTWBU808)
864-7183	Nissan Altima/Maxima 2013-2015 5-Btn Smart Key (KR5S180144014)
864-7191	Nissan Altima/Maxima 2013-2015 4-Btn Smart Key (KR5S180144014)
864-7262	Nissan Altima/Maxima 2016-2018 4-Btn SK (KR5S180144014)
864-7284	Nissan Altima/Maxima 2016-2018 5-Btn Smart Key (KR5S180144014)
864-7324	Nissan Altima/Sentra/Versa 2019-2020 4-Button Smart Key (KR5TXN1)

LOOK-A-LIKE REMOTES

Alphabetical by
make & model

ORDER #	ITEM #
864-7340	Nissan Altima/Sentra/Versa 2019-2021 5-Btn Smart Key (KR5TXN4)
864-7274	Nissan Maxima/Sentra 2007-2012 4-Btn Smart Key (CWTWBU735)
864-7290	Nissan Murano/Path/Titan 2015-2018 4-Button SK (KR5S180144014)
864-7308	Nissan Rogue 2014-2018 4-But- ton Smart Key (KR5S180144106)
864-7362	Nissan Rogue 2014-2019 3-Btn Flip-Style Remote Head Key (CWTWB1G767)
864-7236	Nissan Sentra/Versa 2013- 2019 4-Btn Smart Key w/Trunk (CWTWB1U840)
864-7171	Nissan/Infiniti 2002-2015 3-Btn Remote (KBRASTU15)
864-7174	Nissan/Infiniti 2007-2015 4-Btn Smart Key w/ Trunk (KR55WK48903)
864-7186	Nissan/Infiniti/Chev 2003-2019 4-Btn RHK (CWTWB1U751)
864-7268	Subaru 2012-2019 4-Button Remote Head Key w/ Trunk (CWTWB1U811)
864-7355	Subaru 2014-2020 4-Button Smart Key w/ Trunk (HYQ14A- HC)
864-7360	Subaru Legacy / Outback 2010- 2014 4-Button RHK w/ Trunk (CWTWBU766)
864-7176	Toyota 2004-2017 3-Button Remote (GQ43VT20T)
864-7190	Toyota 2010-2018 3-Btn Remote Head Key (HYQ12BBY, G-Chip)
864-7316	Toyota 4Runner/Prius/Venza 2009-2019 3-Btn Smart Key (HYQ14ACX, 5290)

ORDER #	ITEM #
864-7341	Toyota Avalon/Camry/Corolla 2012-2019 4B Smart Key (HY- Q14FBA/0020/G)
864-7198	Toyota Avalon/Solara 2005- 2008 4-Button Remote w/ Trunk (GQ43VT20T)
864-7199	Toyota Camry 2011 4-Btn Remote Head Key (HYQ12BBY, G-Chip)
864-7240	Toyota Camry 2012-2014 4-Btn RHK (HYQ12BDM, G-Chip)
864-7260	Toyota Camry 2018+ 4-Button Remote w/ Trunk (HYQ12BFB, H-Chip)
864-7173	Toyota Camry/Corolla 2006- 2011 4-Btn RHK (HYQ12BBY, 4D-67)
864-7203	Toyota Camry/Corolla 2014- 2018 4-Btn RHK w/ Trunk (HYQ12BDM, H-Chip)
864-7353	Toyota Camry/Corolla 2014- 2019 4-Btn RHK w/ Trunk (HYQ12BEL, H-Chip)
864-7350	Toyota Corolla/Venza 2010- 2015 4-Btn RHK w/ Trunk (GQ4- 29T, G-Chip)
864-7192	Toyota RAV4 2006-2010 3-Btn Remote Head Key (HYQ12BBY, 4D-67)
864-7334	Toyota SUV/Truck 2013-2018 3-Btn Remote Head Key (GQ4- 52T, H-Chip)
864-7363	Volkswagen 2011-2016 4-Button Flip Remote Head Key "PEPS" (NBOG10206T)
864-7338	VW 2011-2016 4-Button Flip Remote Head Key

GRADE 1 LEVERSETS

LC1200 SERIES Heavy-Duty Clutch Lever Grade 1 Locksets



Cortland Lever Design

Standard Features

- ADA Compliant
- Freewheeling clutch (added security from hammer attacks), independent spring cages
- Fits a standard 161 lock prep with through-bolting through door
- Standard ASA strike included
- **Certification:** ANSI A156.2 - 2003, Series 4000, Grade 1, 800000 cycles, UL listed for 3-hour fire door
- **Warranty:** 5-year limited warranty
- **Door Range:** 1-3/8" to 1-3/4"
- **Backset:** 2-3/4"
- **Lever:** Non-handed

SCHLAGE C KEYWAY

ORDER #	ITEM #	FUNCTION
864-4110	LC1275 CTL 26D	Passage
864-4140	LC1276 CTL 26D	Privacy
864-4150	LC1281 CTL 26D	Entry
864-4170	LC1284 CTL 26D	Classroom
864-4180	LC1286 CTL 26D	Storeroom
864-4190	LC12110 CTL 26D	Classroom Intruder

SFIC PREP for Small Format IC, Less Core

ORDER #	ITEM #	FUNCTION
864-4250	LC1281 CTL IC	Entry
864-4270	LC1284 CTL IC	Classroom
864-4280	LC1286 CTL IC	Storeroom

LTP26 IC Core Tailpiece for Levers

864-0005 NSP LTP26

IT'S ELECTRIC!

EL LC1286

Heavy-Duty Electrified Storeroom Lever Lockset



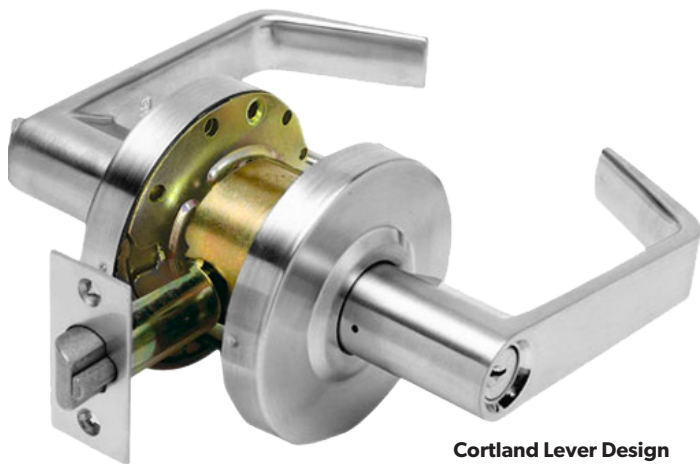
Cortland Lever Design

Standard Features

- ADA Compliant
- Freewheeling clutch (added security from hammer attacks), independent spring cages
- Fits a standard 161 lock prep with through-bolting through door
- Standard ASA strike included
- Fail safe/fail secure
- **Certification:** ANSI A156.2 - 2003, Series 4000, Grade 1, 800000 cycles, UL listed for 3-hour fire door
- **Warranty:** 5-year limited warranty
- **Door Range:** 1-3/8" to 1-3/4"
- **Backset:** 2-3/4"
- **Lever:** Non-handed
- **Cylinder:** Schlage C 6-pin (SCC) keyway
- **Voltage:** Field selectable 12/24 VDC
- **RX:** with Request to Exit switch

ORDER #	ITEM #	FUNCTION
864-4182	EL LC1286 R CTL US26D	Storeroom
864-4184	EL LC1286 R CTL US26D RX	Storeroom

GRADE 2 LEVERSETS



Cortland Lever Design

LC2600 SERIES

Standard-Duty Cylindrical Grade 2 Leversets

Standard Features

- **Certification:** ANSI A156.2, Series 4000, Grade 2, 400,000 cycles, ANSI A117.1 accessibility (ADA) code, UL listed for 3 hour fire door.
- **Chassis:** Cylindrical, steel-coated w/zinc dichronate (corrosion resistance)
- **Lever:** Nonhanded
- **Latch:** 1-1/8" x 2-1/4" square corner faceplate, 3/4" housing, 1/2" throw (Stainless Steel)
- **Thru-bolts:** Removable
- **Backset:** 2-3/4"
- **Door Range:** 1-3/8" to 2"
- **Strike:** Square corner 1-1/4" x 4-7/8" ANSI ASA Strike
- **Door Preparation:** 2-1/8" diameter for bore, 1" diameter latch bore. Fits standard 161 door prep
- **Cylinder:** Available with Schlage C 6-pin (SCC) keyway or SFIC prep (less core). 2 nickel silver keys per lock
- **Warranty:** One year manufacturer's limited warranty

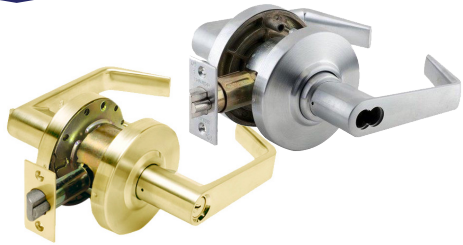
GRADE 2 LEVERSETS

LC2600 SERIES

Standard-Duty Cylindrical Grade 2 Leversets

2-3/4" BACKSET Schlage C Keyway

ORDER #	ITEM #	FUNCTION
864-1010	LC2675 R CTL 26D	Passage
864-1040	LC2676 R CTL 26D	Privacy
864-1050	LC2681 R CTL 26D	Entry
864-1070	LC2684 R CTL 26D	Classroom
864-1080	LC2686 R CTL 26D	Storeroom
864-1090	LC2687 R CTL 26D	Institution
864-5010	LC2675 R CTL 10B	Passage
864-5040	LC2676 R CTL 10B	Privacy
864-5050	LC2681 R CTL 10B	Entry
864-5070	LC2684 R CTL 10B	Classroom
864-5080	LC2686 R CTL 10B	Storeroom
864-1015	LC2675 R CTL US3	Passage
864-1045	LC2676 R CTL US3	Privacy
864-1055	LC2681 R CTL US3	Entry
864-1085	LC2686 R CTL US3	Storeroom



2-3/8" BACKSET Schlage C Keyway

ORDER #	ITEM #	FUNCTION
864-1011	LC2675 R CTL 26D	Passage
864-1041	LC2676 R CTL 26D	Privacy
864-1051	LC2681 R CTL 26D	Entry
864-1081	LC2686 R CTL 26D	Storeroom

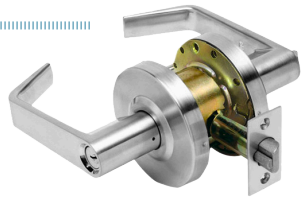
SFIC PREP 2-3/4" Backset, Less Core

ORDER #	ITEM #	FUNCTION
864-6051	LC2681 CTL 26D SFIC	Entry
864-6071	LC2684 CTL 26D SFIC	Classroom
864-6081	LC2686 CTL 26D SFIC	Storeroom

LC2600 SERIES Clutch Leversets

Grade 2 Commercial Standard Duty

ORDER #	ITEM #	FUNCTION
864-3050	LC2681 CTL FW 26D 234 A SCC	Entry
864-3070	LC2676 R CTL FW 26D 234 KD	Classroom
864-3080	LC2686 R CTL FW 26D 234 KD	Storeroom



2600 SERIES Latches

ORDER #	ITEM #	BACKSET
864-0238	CL101974 Latch Gr2 Cyl 238 GRD 32D Deadlatch	2-3/8"
864-1238	CL10216 Latch Gr2 Cyl 238 UNG 32D Plain Latch	2-3/8"
864-0038	CL100375 26D Plain Latch	2-3/8"
864-0234	CLA10213 Latch Gr2 Cyl 234 GRD 32D Deadlatch	2-3/4"
864-1234	CL100214 Latch Gr2 Cyl 234 UNG 32D Plain Latch	2-3/4"



GRADE 2 LEVERSETS



Cortland Lever Design

LC2400 SERIES Heavy-Duty Clutch Cylindrical Grade 2 Leversets

Standard Features

- **Certification:** ANSI A156.2, Series 4000, Grade 2, 400,000 cycles, ANSI A117.1 accessibility (ADA) code, UL listed for 3 hour fire door.
- **Chassis:** Cylindrical, steel-coated w/zinc dichronate (corrosion resistance), freewheeling clutch (added security from hammer attacks), independent spring cages
Chassis conforms to Grade 1 ANSI A156.2 specifications
- **Lever:** Nonhanded, solid cast.
- **Latch:** 1-1/8" x 2-1/4" square corner faceplate, 1" housing diameter (Stainless Steel), 1/2" throw
- **Strike:** Square corner 1-1/4" x 4-7/8" ANSI ASA Strike.
- **Thru-bolts:** Thru-bolts standard
- **Backset:** 2-3/4"
- **Door Range:** 1-3/8" to 2"
- **Door Preparation:** 2-1/8" diameter for bore, 1" diameter latch bore. Fits standard 161 door prep
- **Cylinder:** Schlage C 6-pin solid brass (SCC) keyway or SFIC prep (less core). 2 nickel silver keys per lock
- **Warranty:** One year manufacturer's limited warranty

GRADE 2 LEVERSETS

LC2400 SERIES

Heavy-Duty Clutch Cylindrical Grade 2 Leversets



SCHLAGE C KEYWAY

ORDER #	ITEM #	FUNCTION
864-2010	LC2475 CTL 26D 234 A	Passage
864-2040	LC2476 CTL 26D 234 A	Privacy
864-2050	LC2481 CTL 26D 234 A SCC	Entry
864-2070	LC2484 CTL 26D 234 A SCC	Classroom
864-2079	LC2480 R CTL 26D 234 A SCC	Communicating
864-2080	LC2486 CTL 26D 234 A SCC	Storeroom

SFIC PREP for Small Format IC, Less Core

ORDER #	ITEM #	FUNCTION
864-4050	LC2481 IC CTL 26D 234 A	Entry
864-4070	LC2484 IC CTL 26D 234 A	Classroom
864-4080	LC2486 IC CTL 26D 234 A	Storeroom

LFIC PREP for Schlage Large Format IC, Less Core

ORDER #	ITEM #	FUNCTION
864-6050	LC2481 CTL 26D 234 A LFIC	Entry
864-6070	LC2486 CTL 26D 234 A LFIC	Classroom
864-6080	LC2484 CTL 26D 234 A LFIC	Storeroom

Communicating Function: Latchbolt operated by lever from one side at all times.

LC2400 SERIES Latches

ORDER #	ITEM #	BACKSET
864-3238	CL101974 Latch Gr2 Cyl 238 GRD 32D Deadlatch	2-3/8"
864-2238	CL100375 Latch Gr2 Cyl 238 UNG 32D Plain latch	2-3/8"
864-3234	CL100213 Latch Gr2 Cyl 234 GRD 32D Deadlatch	2-3/4"
864-2234	CL100214 Latch Gr2 Cyl 234 UNG 32D Plain latch	2-3/4"



GRADE 2 KNOB LOCKS

KC2300 SERIES

Heavy-Duty Commercial Grade 2 Knobsets



For Office Buildings, Schools,
Churches, Restaurants,
Warehouses & Apartments

Standard Features

- **Performance:** ANSI A156.2, Series 4000, Grade 2, UL listed for 3 hour fire door
 - **Chassis:** Cylindrical, steel-coated with zinc dichromate (corrosion resistance)
 - **Latch:** 1-1/8" x 2-1/4", square corner faceplate, 1" housing diameter (stainless steel), 1/2" throw
 - **Rose:** 3" diameter
 - **Strike:** Square corner 1-1/4" x 4-7/8"
 - **Door Preparation:** 2-1/8" diameter for knob, 1" diameter for latch bolt. Fits standard 161 door prep
 - **Cylinder:** Schlage C, 6-pin solid brass (SCC) keyway. 2 nickel silver keys per lock
- Application: For wood or metal interior/exterior doors, 1-3/8" to 1-3/4" thickness

2-3/4" BACKSET Schlage C Keyway

ORDER #	ITEM #	FUNCTION
864-9110	KC2375 EMP US3 234 A	Passage
864-9140	KC2376 EMP US3 234 A	Privacy
864-9150	KC2381 EMP US3 234 A SCC KD	Entry
864-9180	KC2386 EMP US3 234 A SCC KD	Storeroom
864-9010	KC2375 EMP US32D 234 A	Passage
864-9040	KC2376 EMP US32D 234 A	Privacy
864-9050	KC2381 EMP US32D 234 A SCC KD	Entry
864-9080	KC2386 EMP US32D 234 A SCC KD	Storeroom
864-9012	KC2375 EMP 10B 234 A	Passage
864-9042	KC2376 EMP 10B 234 A	Privacy
864-9052	KC2381 EMP 10B 234 A SCC KD	Entry
864-9082	KC2386 EMP 10B 234 A SCC KD	Storeroom

NEED LATCHES?

Uses the same latches as the LC2400 Series, see page 15.

2-3/8" BACKSET Schlage C Keyway

864-9011	KC2375 EMP US32D 238 A	Passage
864-9041	KC2376 EMP US32D 238 A	Privacy
864-9051	KC2381 EMP US32D 238 A SCC KD	Entry
864-9081	KC2386 EMP US32D 238 A SCC KD	Storeroom

GRADE 2 DEADBOLTS

DB160 SERIES Heavy-Duty Grade 2 Deadbolts

Standard Features

- **Performance** Complies with ANSI A156.5, Grade 1, 250,000 cycles, UL/ULC listed 3 hour fire rating
- **Chassis:** Tubular, steel
- **Latch:** 6-Way Adjustable Latchbolt
- **Backset:** 2-3/4"
- **Strike:** Square corner 1-1/8" x 2-3/4"
- **Door Preparation:** 2-1/8" diameter for bore, 1" diameter for bolt
- **Cylinder:** Schlage C, 6-pin solid brass (SCC) keyway. 2 nickel silver keys per lock



**For Office Buildings, Schools,
Churches, Restaurants, Homes,
Warehouses & Apartments**

SINGLE CYLINDER

ORDER #	ITEM #
864-9400	DB160 SC US3 KA4 SCH C
864-9405	DB160 SC 10B KA4 SCH C
864-9410	DB160 SC 32D KA4 SCH C
864-9415	DB160 SC US5 KA4 SCH C
864-9420	DB160 IC 32D SFIC

DOUBLE CYLINDER

ORDER #	ITEM #
864-9500	DB162 SC US3 KA4 SCH C
864-9505	DB162 SC 10B KA4 SCH C
864-9510	DB162 SC 32D KA4 SCH C
864-9515	DB162 SC US5 KA4 SCH C

"I guarantee you're going to like these locks."

Pete Auseklis,
Vice President



**Quality Products,
Value Priced,
The Professional's Choice**



Use NSP and Increase
Your Profit Margins!

GRADE 3 KNOB LOCKS

KC3600 SERIES

Grade 3 Cylindrical Knob Locks



Standard Features

- **Backset:** Adjustable 2-3/8" to 2-3/4"
- **Strike:** T Strike; Square Corner: 1-1/8" x 2-3/4"
- **Door Range:** 1-3/8" to 1-3/4" thickness; Non-handed
- **Door Prep:** Standard 160/161 door prep
- **Keys:** Two nickel silver keys per lock cylinder
- **Keyway:** SC1 or KW1, KA4
- **Certification:** Meets ANSI A156.2 series 4000, Grade 3
- **Chassis:** Lock chassis steel, zinc dichromated for corrosion resistance. Cylindrical type construction, 200,000 cycles
- **Latchbolt:** Stainless steel with 1/2" throw deadlocking for lock functions
- **Warranty:** One year manufacturer's warranty

SCHLAGE C KEYWAY

ORDER #	ITEM #	FUNCTION
864-7103	KC3675 EMP US3	Passage
864-7403	KC3676 EMP US3	Privacy
864-7503	KC3681 EMP US3	Entry
864-7803	KC3686 EMP US3	Storeroom
864-7105	KC3675 EMP US5	Passage
864-7405	KC3676 EMP US5	Privacy
864-7505	KC3681 EMP US5	Entry
864-7132	KC3675 EMP US32D	Passage
864-7432	KC3676 EMP US32D	Privacy
864-7532	KC3681 EMP US32D	Entry
864-7832	KC3686 EMP US32D	Storeroom

KWIKSET KW1 KEYWAY

ORDER #	ITEM #	FUNCTION
864-8503	KC3681 EMP US3	Entry
864-8505	KC3681 EMP US5	Entry
864-8532	KC3681 EMP US32D	Entry

LATCHES

ORDER #	ITEM #
864-7000	RL100032 US32D Adj Plain Latch
864-7010	RL100255 US3 Adj Plain Latch
864-8000	RL100258 US32D Adj Deadlatch
864-8010	RL100135 US3 Adj Deadlatch

GRADE 3 DEADBOLTS

DB3000 SERIES

Residential Tubular Grade 3 Deadbolts

Standard Features

- **Backset:** Adjustable 2-3/8" to 2-3/4"
6-way Latch
- **Strike:** Square corner faceplate
1-1/8" x 2-3/4"
- **Door Range:** 1-3/8" to 1-3/4"
- **Cylinder:** SC1 or KW1
- **Keys:** Two nickel silver keys per lock cylinder
- **Door Prep:** 2-1/8" diameter for bore, 1" diameter for bolt
Fits standard 161 door prep
- **Certification:** ANSI 156.5 - 2001, Grade 3, 100,000 cycles
- **Chassis:** Tubular, steel
- **Deadbolt:** 1" x 2-1/4", square corner faceplate, 1" housing diameter (Stainless Steel), 1" throw, roller bar (added security for hacksaw blade cutting)
- **Warranty:** One year limited manufacturer's warranty



SINGLE CYLINDER

ORDER #	ITEM #	KEYWAY
864-6003	DB3051 US3	KW1
864-6032	DB3051 US32D	KW1
864-6005	DB3051 US5	KW1
864-6103	DB3051 US3	SC1
864-6132	DB3051 US32D	SC1
864-6105	DB3051 US5	SC1

DEADBOLT LATCHES

ORDER #	ITEM #
864-6010	6-Way Deadbolt Latch US3
864-6000	6-Way Deadbolt Latch US32D

DOUBLE CYLINDER

ORDER #	ITEM #	KEYWAY
864-6203	DB3041 US3	KW1
864-6232	DB3041 US32D	KW1
864-6205	DB3041 US5	KW1
864-6303	DB3041 US3	SC1
864-6332	DB3041 US32D	SC1
864-6305	DB3041 US5	SC1
864-6310	DB3041 US10B	SC1

NARROW STILE LOCKS



Includes BOTH faceplates:

- AL Satin Aluminum
- DURO Duronodic/ Brown

NARROW STILE LOCKS

- For use with Mortise Cylinders, Lever Handles, Push Paddles
- 1 x 5-13/16" Case size

Cylinder & handle not included.

Heavy Duty Deadlatches

This lock can be locked in a "hold-open" position. It is ideal for use during heavy traffic flow and will allow two way traffic in buildings that require a free two way entrance at times and an "exit only" at other times.

ORDER #	ITEM #	BACKSET
844-0001	AD100226 AL/DURO	31/32"
844-0010	AD100222 AL/DURO	1-1/8"



Includes BOTH faceplates:

- AL Satin Aluminum
- DURO Duronodic/ Brown

Deadlocks

A 360° turn of the key (or thumb turn) throws or retracts the counterbalanced bolt. The key can then be removed only when the bolt is in a positive locked or unlocked position. The lock accepts any standard mortise cylinder (with M.S. cam) from either or both sides.

Cylinder not included.

ORDER #	ITEM #	BACKSET
844-0020	AD100210 AL/DURO	31/32"
844-0030	AD100206 AL/DURO	1-1/8"

NARROW STILE LOCKS

Hook-Type Deadlocks

Cylinder not included.

ORDER #	ITEM #	BACKSET
844-0040	AD100218 AL/DURO	31/32"
844-0050	AD100214 AL/DURO	1-1/8"

Includes BOTH faceplates:

- AL Satin Aluminum
- DURO Duronodic/ Brown



Lever Handles

For use with Deadlatch. Reversible (LH or RH). Complete with operating cam plug which will activate narrow stile dead latches. Cam plug is secured to lever unit assembly by two hardened steel pins. Cam plug locks into dead latch like mortise cylinder by use of set screw in dead latch.

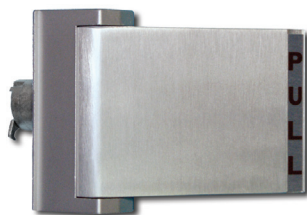
ORDER #	ITEM #
844-0060	AD100275 AL
844-0065	AD100277 DURO



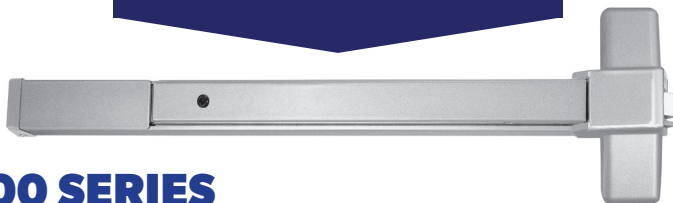
PUSH/PULL Paddles

Reversible Paddle Assembly

ORDER #	HAND	ITEM #
844-0110	RH	AD100363 AL
844-0115	RH	AD100360 DURO



EXIT DEVICES



8300 SERIES

Heavy-Duty Commercial Grade 1 Rim Exit Device

Standard Features

- **Certification:** ANSI A156.3, 1994, Grade 1, UL listed
- **Rail:** Fits 28" to 36" doors
- **Latch:** Stainless steel 5/8" throw
- **Backset:** 2-3/4"
- **Strike:** Adjustable with slotted holes for adjustments
- **Fasteners:** Accommodates wood or metal doors
- **Door Range:** 1-3/4" to 2" thick doors
- **Warranty:** 10 year limited

ORDER #	ITEM #	DESCRIPTION
864-0100	NSP 8300B AL 416	36" Length
864-0110	F8300B AL	Fire Rated, 36"
864-0105	NSP 8300A AL 416	48" Length
864-0205	EX100007	Overlapping Strike
864-0101	NSP HEX	Hex Dogging Key

Exit Device Parts & Trim



416 Standard Strike

for NSP Rim Exit Devices

ORDER #	ITEM #
864-0022	NSP EX100089 BLK



8PDT Exterior Blank Pull

ORDER #	ITEM #
864-0300	8PDT AL



8P03 Exterior Pull

with cylinder cut out

ORDER #	ITEM #
864-0400	8P03 AL



CTL881



CTL881C

CTL881 Exterior Lever Trim

Includes SC1 cylinder, without clutch

ORDER #	ITEM #	FUNCTION
864-0450	EX100006 26D	Passage
864-0500	CTL881 26D	Entry
864-0600	CTL886 26D	Storeroom

CTL881C Ext. Escutcheon Trim

Includes 1-1/4" SC1 cylinder, freewheeling

ORDER #	ITEM #	FUNCTION
864-0700	CTL881C 26D	Entry
864-0800	CTL886C 26D	Storeroom

Overlapping Strike

ORDER #	ITEM #
864-0203	EX100309-ALUM

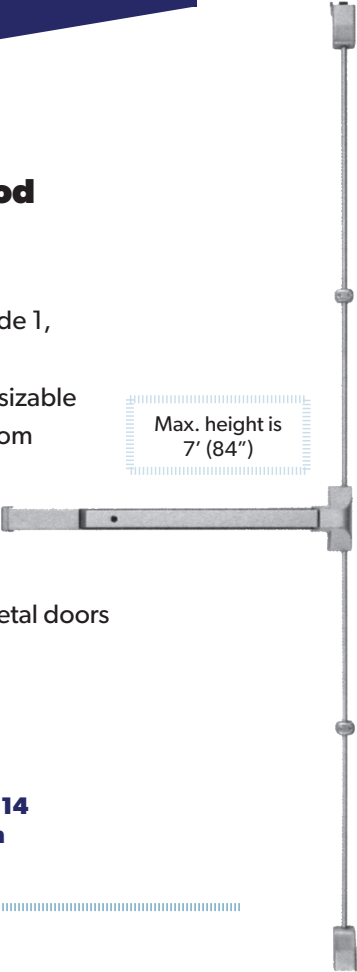
EXIT DEVICES

8400 SERIES

Heavy-Duty Commercial Grade 1 Surface Vertical Rod

Standard Features

- **Certification:** ANSI A156.3, 1994, Grade 1, UL listed
- **Rail:** Fits 28" to 36" doors. Easily field sizeable
- **Latch:** Pullman latch bolts top and bottom
Stainless steel 1/2" throw
- **Backset:** 2-3/4"
- **Strike:** Adjustable with slotted holes for adjustments
- **Fasteners:** Accommodates wood or metal doors
- **Door Range:** 1-3/4" to 2" thick doors
- **Door Preparation:** Surface Mounted
- **Warranty:** 10 year limited



Max. height is
7' (84")

ORDER #	ITEM #
864-0200	8400 AL 426

See page 14
for Trim

8400 SERIES Trim

EX100309-ALUM

12" Vertical Rod Extension

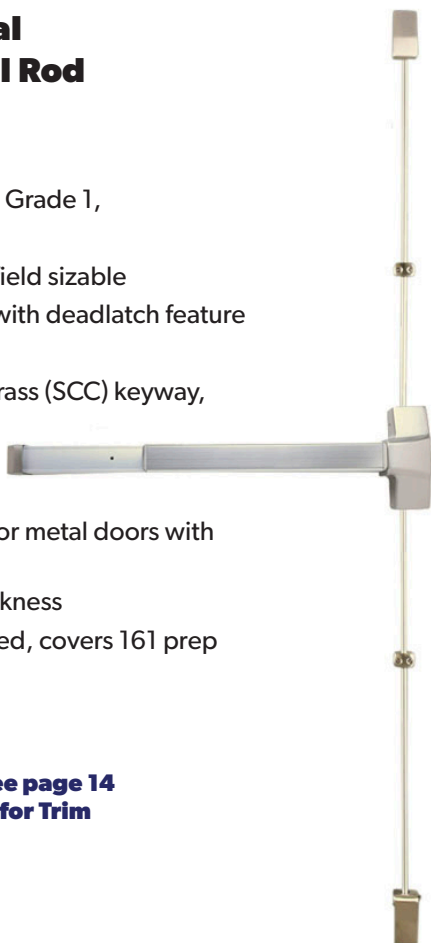
ORDER #	ITEM #
864-0203	EX100309-ALUM

9400 SERIES

Heavy-Duty Commercial Grade 1 Surface Vertical Rod

Standard Features

- **Certification:** ANSI A156.3, 3001, Grade 1, UL/ULC listed
- **Rail:** Fits 30" to 36" doors. Easily field sizeable
- **Latch:** Stainless steel 5/8" throw with deadlatch feature
- **Backset:** 2-3/4"
- **Cylinder:** Schlage C, 6-pin solid brass (SCC) keyway, keyed different (KD)
- **Strikes:** Adjustable with slotted holes for adjustments
- **Fasteners:** Accommodates wood or metal doors with thru bolts standard
- **Door Range:** 1-3/4" to 2-1/4" thickness
- **Door Preparation:** Surface mounted, covers 161 prep
- **Warranty:** 10 year limited



ORDER #	ITEM #
864-0201	9400B 36" 32D

See page 14
for Trim

9500 SERIES

Heavy-Duty Commercial Grade 1 Architectural Rim Exit Device



Standard Features

- **Certification:** ANSI A156.3, 2001, Grade 1, UL Listed
- **Rail:** Fits 30" to 36" doors
- **Latch:** Stainless steel 3/4" throw with deadlatch feature
- **Backset:** 2-3/4"
- **Strikes:** Adjustable with slotted holes for adjustments
- **Thru Bolts:** Standard, accommodates wood & metal doors
- **Door Thickness:** For 1-3/4" to 2-1/4" doors
- **Door Prep:** Surface mounted and covers 161 prep
- **Warranty:** 10 year limited
- Dogging Key included

ORDER #	ITEM #	DESCRIPTION
864-0115	9500B 36" 32D	Standard Device
864-0120	9500B/EG D/E	Delayed Egress
864-0215	F9500 36" 32D	Fire Rated

**See page 22
for Trim**

DOOR CLOSERS

900 SERIES

Heavy-Duty Commercial Grade 1 Surface Applied Closer

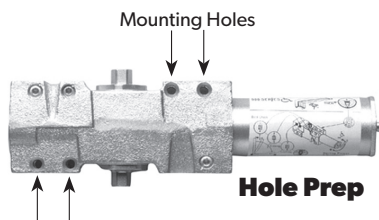


Standard Features

- **Certification:** ANSI A156.4 Grade 1, 2 million cycles, UL listed
- **Chassis/Closer:** Non-handed, cast steel, mounting to regular, top jamb or parallel arm
- **Main Arm:** Forged steel; accommodates reveals up to 3.25", adjustable extension arm
- **Spring Power:** Adjustable Size 1-6
- **Backcheck:** Adjustable hydraulic provides cushioning and prevents uncontrolled opening of the door
- **Valves:** Adjustable, independent, non-critical (sweep and latch), consistent closing speeds
- **Fasteners:** Compatible for aluminum, hollow metal and wood doors and frames
- **Door Range:** Up to 180°
- **Warranty:** 25 year limited manufacturer's warranty

ORDER #	ITEM #
864-0010	12916 BC PA AL
864-0015	15916 BC PA Duro

HOLE PATTERN:
5" x 2 1/4" Offset



900 SERIES 900HO Hold Open Arm

ORDER #	ITEM #
864-0029	900HO ARM AL



DOOR CLOSERS

600 SERIES Commercial Grade 1 Door Closer

- **Certification:** ANSI A156.4, Grade 1, 2 million cycles, UL listed
- **Spring Power:** Adjustable Size 3-6
- **Chassis/Closer:** Non-handed, cast aluminum, mounting to regular, top jamb, or parallel arm applications
- **Backcheck:** Adjustable
- Fits Interior 3'0", Exterior 4'0"
- **Door Range:** Up to 180°
- With Parallel Arm Bracket & Backcheck
- Same Hole Pattern as Norton 1600 & Yale 50 Series



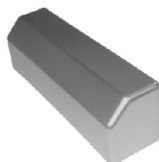
ORDER #	ITEM #
864-0020	12640 BC PA AL
864-0025	15640 BC PA Duro

HOLE PATTERN:

9-1/16" x 3/4"

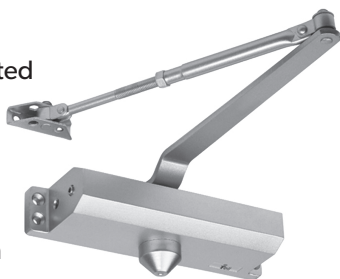
High Impact Full Plastic Cover for 600 Series Closer

ORDER #	ITEM #
864-0021	DC100102 AL
864-0026	DC100103 Duro



500 SERIES Standard Duty Grade 3 Surface Applied Closer

- **Certification:** ANSI A156.4, Grade 3, UL listed
- **Chassis/Closer:** Non-handed, cast aluminum, mounting to regular, top jamb, or parallel arm applications
- **Main Arm:** Stamped steel, accommodates reveals up to 3-14", adjustable extension arm
- **Door Range:** Up to 180°
- **Spring Power:** Choose Size 3 or Size 4
- **Fasteners:** Compatible for aluminum, hollow metal, and wood doors and frames
- Same Hole Pattern as Norton 1600 & Yale 50 Series



HOLE PATTERN:

9-1/16" x 3/4"

ORDER #	ITEM #
864-0030	12543 BC PA AL Size 3
864-0035	12543 BC PA AL Size 4

PIVOTS

FEATURES

- 1/8" Vertical Adjustment
- All-weather proof, aluminum case
- Completely theft-proof, yet easy removable, and replaceable in unlocked position
- Non-handed, easy to install
- Smooth, precision-made select ball-bearing operation
- Complete with screws, anchors, mounting materials

3/4" Offset Pivot Sets



OP-27 (Cross Ref: Jackson J27)

For Doors Flush with Face of Frame

ORDER #	ITEM #
844-0027	NSP OP-27 Alum
844-0127	NSP OP-27 Duro

OP-28 (Cross Ref: Jackson J28)

For Doors Recessed 1/8"

ORDER #	ITEM #
844-0028	NSP OP-28 Alum
844-0128	NSP OP-28 Duro

HINGES

4.5" x 4.5"

- **Wrought steel, Full Mortise**
- **Plain Bearing (H4545).** For use on standard weight doors or doors receiving low frequency usage.
- **Ball Bearing (H4545BB).** Use on standard weight doors receiving average frequency usage. Must be used on doors in conjunction with door closers and on all fire rated openings.



ORDER #	ITEM #
668-0010	H4545 26D
668-0020	H4545BB 26D
668-0030	H4545BB USP NRP

Comparison Chart

TYPE	TELL	ANSI	HAGER	MCKINNEY	STANLEY	BOMMER
Steel Ball Bearing	H4545BB	A8112	BB1279	TB2714	FBB179	BB500
Steel Ball Bearing	H4545	A8133	1279	T2714	F179	5000

STRIKES, ANSI THUMBTURN CYLS.

A.N.S.I. Strikes



1-1/4" x 4-7/8"

ORDER #	ITEM #
845-5163	S-5164 US3
845-5164	S-5164 26D

Mortise Thumbturn Cylinders

Standard 1" mortise cyl.

ORDER #	ITEM #
845-6410	S-6410 26D
845-6510	S-6410 079



26D: Dull Chrome
079: Duronodic

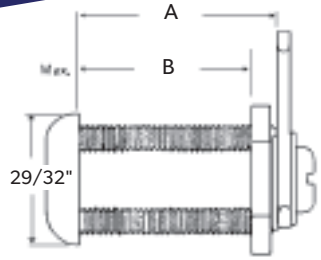
CAM LOCKS

Cam Locks



Use Y11 (IN8, K54G)
key blanks

12 per box



- Includes two cams:
- 2.25" Straight cam
 - 1.5" Offset cam

Two stop washers included: 90° & 180°

Spur washer included for wood applications.

NSP-C8300

A: 3/8"	B: 5/16"
845-8301	KA-340
845-8302	KA-341
845-8303	KA-342
845-8304	KA-343
845-8305	KA-344
845-8309	KD

NSP-C8400

A: 5/8"	B: 5/16"
845-8401	KA-340
845-8402	KA-341
845-8403	KA-342
845-8404	KA-343
845-8405	KA-344
845-8509	KD

NSP-C8500

A: 7/8"	B: 21/32"
845-8501	KA-340
845-8502	KA-341
845-8503	KA-342
845-8504	KA-343
845-8509	KA-344
845-8508	KD

NSP-C8600

A: 1-1/8"	B: 15/16"
845-8601	KA-340
845-8602	KA-341
845-8603	KA-342
845-8604	KA-343
845-8605	KA-344
845-8609	KD

NSP-C8700

A: 1-3/8"	B: 1-1/8"
845-8701	KA-340
845-8702	KA-341
845-8703	KA-342
845-8704	KA-343
845-8705	KA-344
845-8706	KA-SL540
845-8509	KD

Wood Drawer Locks

SOU-S-711

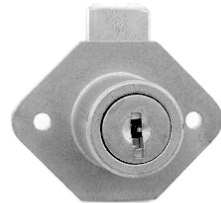
7/8" Brass

845-0717	KD
845-0712	KA-340
845-0713	KA-341
845-0714	KA-342
845-0785	KA-343
845-0716	KA-344

SOU-S-711C

7/8" Cadmium

845-7110	KD
845-7111	KA-340
845-7112	KA-341



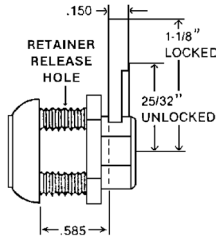
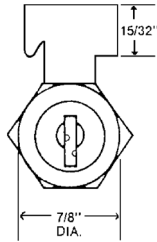
SOU-S-712

1-1/8" Brass

845-7120	KD
845-7121	KA-340
845-7122	KA-341

DRAWER LOCKS

Metal Drawer Locks



SOU-S-1974/5

845-1974	KD
845-1975	KA-340

Thumbturn Locks

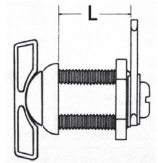
When you don't need a key!
Have threaded shells and come staked to a 90° rotation. Just apply the cam accordingly for any clockwise or counter-clockwise rotation. Spur washer included for wood installation.

- Hex Nut • Sem Screw
- 1-1/4" Straight Cam
- 1-1/8 Offset Cam w/1/4" offset
- Spur Washer, 1/8" • Cylinder Ring



ORDER #	ITEM #	"L"
845-8802	TT625STD	5/8"
845-8803	TT875STD	7/8"
845-8801	TT1125STD	1-1/8"

Includes all necessary parts to perform all locking functions.



File Cabinet Locks

Same size as
Chicago 5002-LP

ORDER #	KEYING
845-5002	S 5002 KA
845-5012	S 5002 KD



Uses H20 key blank
(Order # 685-0020)

PINS & PIN KITS

TOP PINS

Packs of 150

845-1010	10T	845-1105	105T
845-1015	15T	845-1110	110T
845-1020	20T	845-1115	115T
845-1025	25T	845-1120	120T
845-1030	30T	845-1125	125T
845-1035	35T	845-1130	130T
845-1040	40T	845-1135	135T
845-1045	45T	845-1140	140T
845-1050	50T	845-1145	145T
845-1055	55T	845-1150	150T
845-1060	60T	845-1155	155T
845-1065	65T	845-1160	160T
845-1070	70T	845-1165	165T
845-1075	75T	845-1170	170T
845-1080	80T	845-1175	175T
845-1085	85T	845-1180	180T
845-1090	90T	845-1185	185T
845-1095	95T	845-1190	190T
845-1100	100T	845-1195	195T

BOTTOM PINS

Packs of 150

845-2115	115B	845-2210	210B	845-2305	305B
845-2120	120B	845-2215	215B	845-2310	310B
845-2125	125B	845-2220	220B	845-2315	315B
845-2130	130B	845-2225	225B	845-2320	320B
845-2135	135B	845-2230	230B	845-2325	325B
845-2140	140B	845-2235	235B	845-2330	330B
845-2145	145B	845-2240	240B	845-2335	335B
845-2150	150B	845-2245	245B	845-2340	340B
845-2155	155B	845-2250	250B	845-2345	345B
845-2160	160B	845-2255	255B	845-2350	350B
845-2165	165B	845-2260	260B	845-2355	355B
845-2170	170B	845-2265	265B	845-2360	360B
845-2175	175B	845-2270	270B		
845-2180	180B	845-2275	275B		
845-2185	185B	845-2280	280B		
845-2190	190B	845-2285	285B		
845-2195	195B	845-2290	290B		
845-2200	200B	845-2295	295B		
845-2205	205B	845-2300	300B		



.003 pins also available

"Tangle Proof" Springs

845-2110 #151 **pack of 150**

Pin Kits



.003: Top pins .010 - .200 • Bottom pins .156 - .360
.005: Top pins .010 - .300 • Bottom pins .150 - .360

NSP Pin Kits from LAB

Easy access pin compartments all on one level.

ORDER #	PIN INCREMENTS
845-1005	.005 102 sizes
845-1003	.003 124 sizes

Wafer Kit



Standard Wafer Cam Lock Keying Kits

S-SLK-401

ORDER #	ITEM #
845-0401	SLK-401

NSP

RESTRICTED DEALER KEYWAY

PROGRAM



\$1000 Buy-In Includes:

- 500 Coined Keys
- 26 Cylinders (mix/match)
- Authorized Dealer Signage

• **Contract Required**

• **Elite Dealer Preference**

• **O-Bit Cylinders**

• **Schlage Pinning and Cutting Specs**

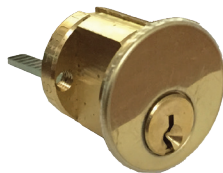
• **6-Pin Cylinders Made in USA from Solid Brass**

• **FREE Coining Die**

Only available from

**SOUTHERN
LOCKEAS**
Electronic Access
Specialists

- Restricted by zip code
- On first come first serve basis
- Annual purchase commitment must be met



PRODUCT LIST

ORDER #	ITEM #	FOR
864-1019	NSP 7186-SL-26D-OB-00	1-1/8 MORT CYL
864-1018	NSP 7186-SL-US3-OB-00	1-1/8 MORT CYL
864-1020	NSP 7186-SL-46-OB-00	1-1/8 MORT CYL
864-1028	NSP 7206-SL-26D-OB-00	1-1/4 MORT CYL
864-1023	NSP 15996-SL-26D-OB-00	KIK CYL
864-1032	NSP 15996-SL-04-OB-00	KIK CYL
864-1022	NSP 7076-SL-26D-OB-00	RIM CYL
864-1021	NSP 7076-SL-US3-OB-00	RIM CYL
864-1121	NSP 7076-SL-46-OB-00	RIM CYL
864-1150	28016 26D 6 PIN UNCOMBINATED IC CORE	
864-1155	28017 26D 7 PIN UNCOMBINATED IC CORE	

CYLINDERS MADE IN USA!

Updated 4/22