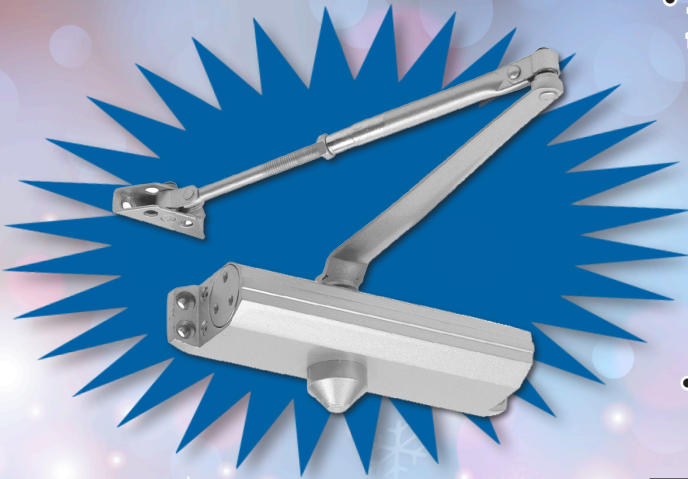




MIX-AND-MATCH: 4 FOR \$100

500 Series Standard Duty Grade 3 Door Closer



- Non-handed, cast aluminum, mounting to regular, top jamb, or parallel arm applications
- Main Arm: Stamped steel, accomodates reels up to 3-14", adjustable extension arm
- Door Range: Up to 180°
- Spring Power: Choose Size 3 or 4
- Fasteners: Compatible for aluminum, hollow metal, and wood doors and frames

ORDER #	ITEM #
864-0030	NSP 12543 BC PA AL Size 3
864-0035	NSP 12543 BC PA AL Size 4

Offer ends 12/31/18

www.SouthernLock.com sales@southernlock.com @SouthernLock facebook.com/SoLock

Main Florida Warehouse: 800-282-2837, Fax: 800-447-2299, PO Box 1980, Pinellas Park, FL 33780

South Florida: 888-780-6071, Fax: 954-943-4211, 1445 SW 6th Ct., Pompano Bch, FL 33069 (Se Habla Español)

Atlanta: 877-217-9396, Fax: 770-455-3969, 3627 Clearview Pkwy., Doraville, GA 30340

Charlotte: 888-571-9145, Fax: (704) 527-0058, 8200-C Arrowridge Blvd, Charlotte, NC 28273 12/1/18

