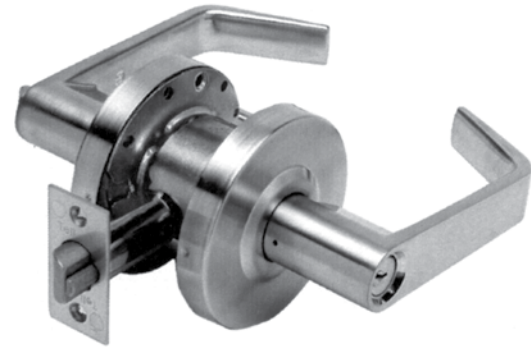




LC2600 Series Standard-Duty Cylindrical Grade 2 Leversets



26D Finish

Standard Features

- **Certification:** ANSI A156.2, Series 4000, Grade 2, 400,000 cycles, ANSI A117.1 accessibility (ADA) code, UL listed for 3 hour fire door.
- **Chassis:** Cylindrical, steel-coated w/zinc dichronate (corrosion resistance).
- **Lever:** Nonhanded.
- **Latch:** 1-1/8" x 2-1/4" square corner faceplate, 3/4" housing, 1/2" throw (stainless steel).
- **Thru-bolts:** **REMOVEABLE.**
- **Backset:** 2-3/4"
- **Strike:** Square corner 1-1/4" x 4-7/8" ANSI ASA Strike.
- **Door Range:** 1-1/2" to 2".
- **Door Preparation:** 2-1/8" diameter for bore, 1" diameter latch bore. Fits standard 161 door prep.
- **Cylinder:** Schlage C 6-pin (SCC) Keyway. 2 nickel silver keys per lock.
- **Warranty:** One year manufacturer's limited warranty.

Order #	Item #	Function	Cat Price
864-1010	LC2675CTL 26D 234	Passage	\$55.44
864-1040	LC2676CTL 26D 234	Privacy	59.40
864-1050	LC2681CTL 26D 234 A SCC	Entry	65.56
864-1070	LC2684CTL 26D 234 A SCC	Classroom	65.56
864-1080	LC2686CTL 26D 234 A SCC	Storeroom	65.56

LC2600 Series Function Chart

FUNCTION	FUNCTION NO.	OUTSIDE	INSIDE	FUNCTION DESCRIPTION	ANSI NO.
Entry/Office	81			<ul style="list-style-type: none"> ■ Latchbolt operated by lever from either side ■ Outside lever locked by turn button on inside ■ Unlocked by key from outside or rotating inside lever 	F82
Entry	82			<ul style="list-style-type: none"> ■ Latchbolt operated by lever from either side ■ Outside lever locked by push button from inside ■ Outside unlocked by key from outside or rotating inside lever 	F82
Classroom	84			<ul style="list-style-type: none"> ■ Latchbolt operated by lever from each side ■ Outside lever locked or unlocked by key from outside ■ Inside lever always operates latch 	F84
Storeroom	86			<ul style="list-style-type: none"> ■ Latch operated by rotating inside lever or key in outside lever ■ Outside lever always fixed 	F86
Privacy Bedroom/Bathroom	76			<ul style="list-style-type: none"> ■ Latchbolt operated by lever from either side ■ Outside lever locked by push button on inside ■ Unlocked by emergency release on outside, rotating inside lever, or closing door 	F76
Passage/Closet	75			<ul style="list-style-type: none"> ■ Latchbolt operated by lever from either side at all times 	F75
Single Dummy	01			<ul style="list-style-type: none"> ■ Pull lever one side ■ No mechanical operation 	

